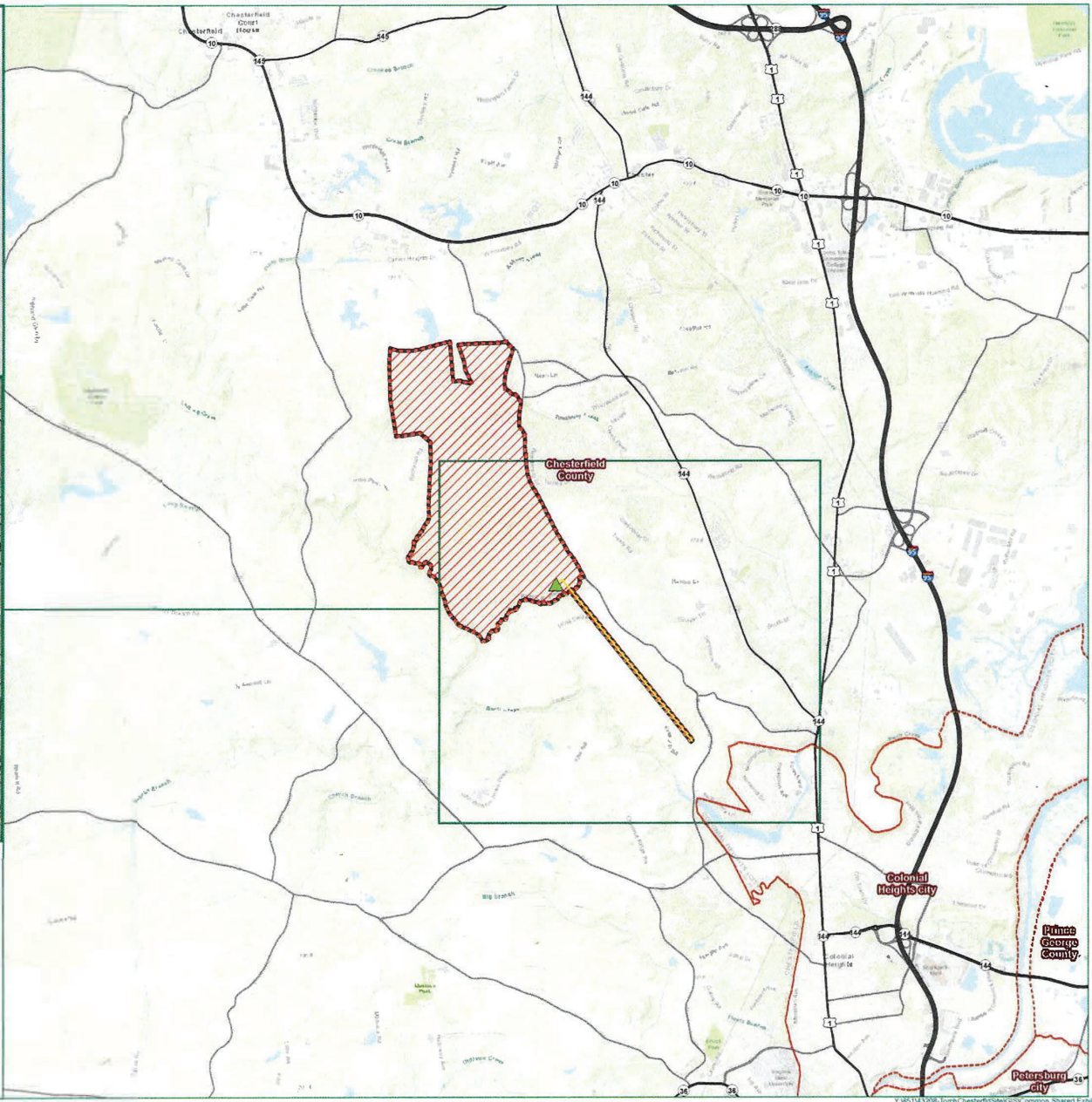


Chester Solar Technology Park, LLC plans to construct the Gen-Tie Line and Collector Substation generally shown as solid yellow line (Gen-Tie Line) and green triangle (Collection Substation) on this map. Dominion Energy Virginia does not oppose the construction, ownership, and operation of the Collection Line and Collection Substation in its service territory.

Signature: *[Handwritten Signature]*
 Date: 10/13/2023
 Title: Authorized Representative

Legend

- Projects Study Limits - 1,710.0 Acres
- Collection Substation
- Gen-Tie Line
- County Boundary
- Limited Access Highways
- US and VA Primary Highways
- Ramps and Local Main Arteries



TIMMONS GROUP
 YOUR VISION ACHIEVED THROUGH OURS.
 1901 BROADWAY PARKWAY, SUITE 200
 CHESTERFIELD COUNTY, VA 23041
 TEL: 804-238-0400
 WWW.TIMMONSGROUP.COM

CHESTER SOLAR TECHNOLOGY PARK, LLC
 CHESTERFIELD COUNTY, VIRGINIA

09/04/2023
 15:00
 CHESTER SOLAR
 L. WHEELER

NOTES
 Project Limits are approximate. The PG&E data is a digital supported and maintained by Virginia Local Government VGLT and VGM through VGLT web Base map. See ESI.

REVISIONS

| NO. | DATE | DESCRIPTION |
|-----|------|-------------|
| | | |
| | | |
| | | |
| | | |
| | | |
| | | |
| | | |
| | | |
| | | |

HIGHWAY MAP

North Arrow

Scale: 1" = 2,500 ft

0 2,500 5,000

Y:\851143208-Torch\Chesterfield\GIS\Common Shared\Exhibits\2075-001-Highway Map.mxd