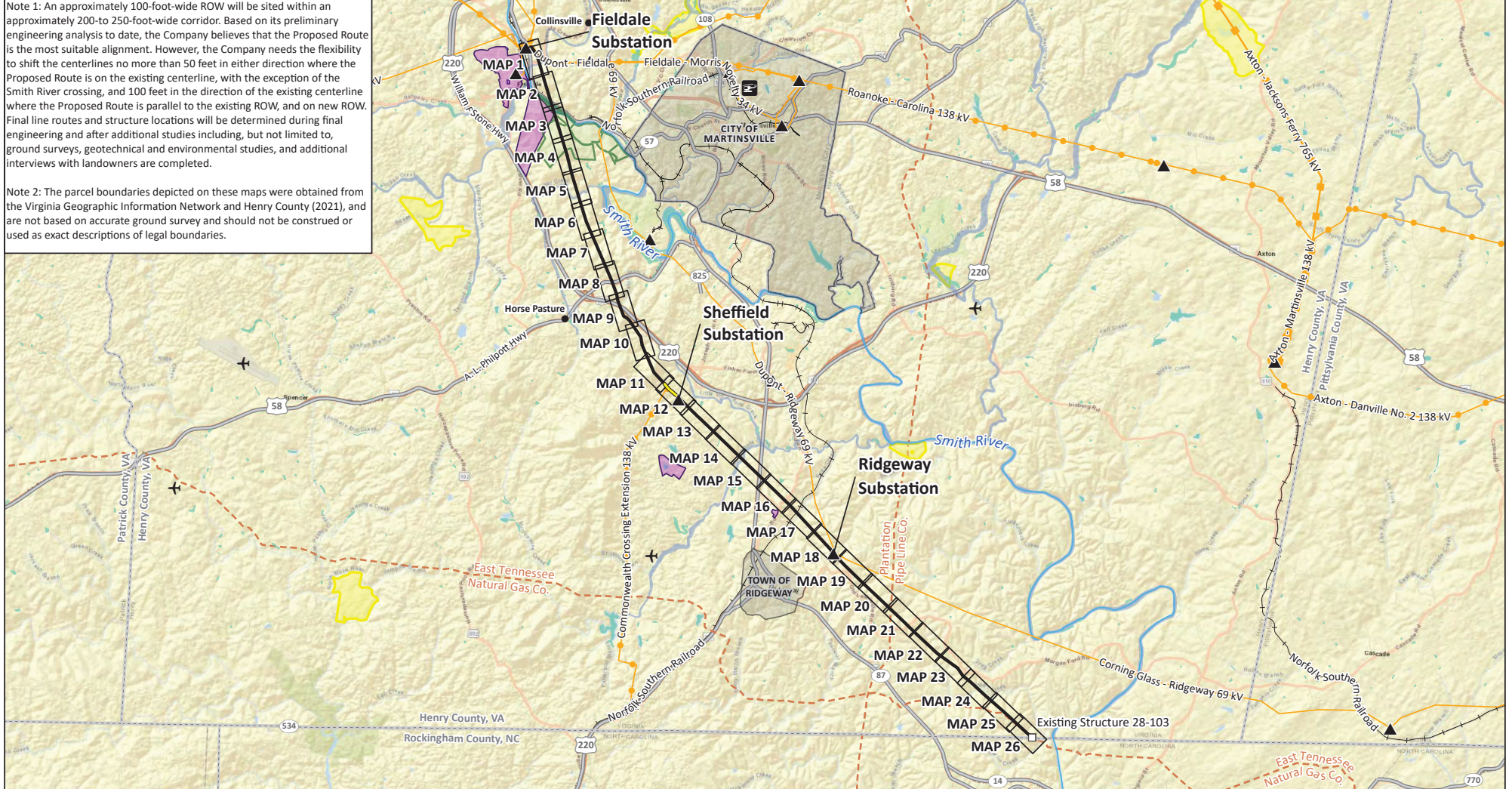


Note 1: An approximately 100-foot-wide ROW will be sited within an approximately 200-to 250-foot-wide corridor. Based on its preliminary engineering analysis to date, the Company believes that the Proposed Route is the most suitable alignment. However, the Company needs the flexibility to shift the centerlines no more than 50 feet in either direction where the Proposed Route is on the existing centerline, with the exception of the Smith River crossing, and 100 feet in the direction of the existing centerline where the Proposed Route is parallel to the existing ROW, and on new ROW. Final line routes and structure locations will be determined during final engineering and after additional studies including, but not limited to, ground surveys, geotechnical and environmental studies, and additional interviews with landowners are completed.

Note 2: The parcel boundaries depicted on these maps were obtained from the Virginia Geographic Information Network and Henry County (2021), and are not based on accurate ground survey and should not be construed or used as exact descriptions of legal boundaries.



- | | | |
|---|-----------------------|--|
| ▲ Existing AEP Substation | ✈ Helipad | ▭ Fieldale Trail and River Access Easement |
| — Fieldale-Dan River 138 kV Line Proposed Route | — Pipeline | ▭ NRHP Resource (Eligible and Listing) |
| — 138 kV to be Reconductored | ✈ Railroad | ▭ VOF-Easement |
| — Existing AEP Transmission Line (69 kV or lower) | — Highway | ▭ Town/City Limits |
| — Existing AEP Transmission Line (115-230 kV) | — Stream (NHD) | ▭ County/State Boundary |
| — Existing AEP Transmission Line (345 kV +) | — NWI Wetland | ▭ Map Tile |
| ✈ Airport | — 100-year Floodplain | |

Henry County,
Virginia

MAD 1983 State Plane Virginia South
FPS 4502 Feet
Lambert Conformal Conic
North American 1983

November 16, 2021



Exhibit 3: GIS Constraints Map INDEX

Fieldale to Ridgeway 138 kV Rebuild Project

0 1.5 3
Miles