

U:\203401269\03\_data\gis\_cad\gis01269\_p\_1a2\_b.mxd Revised: 2019-07-17 By: lberryman

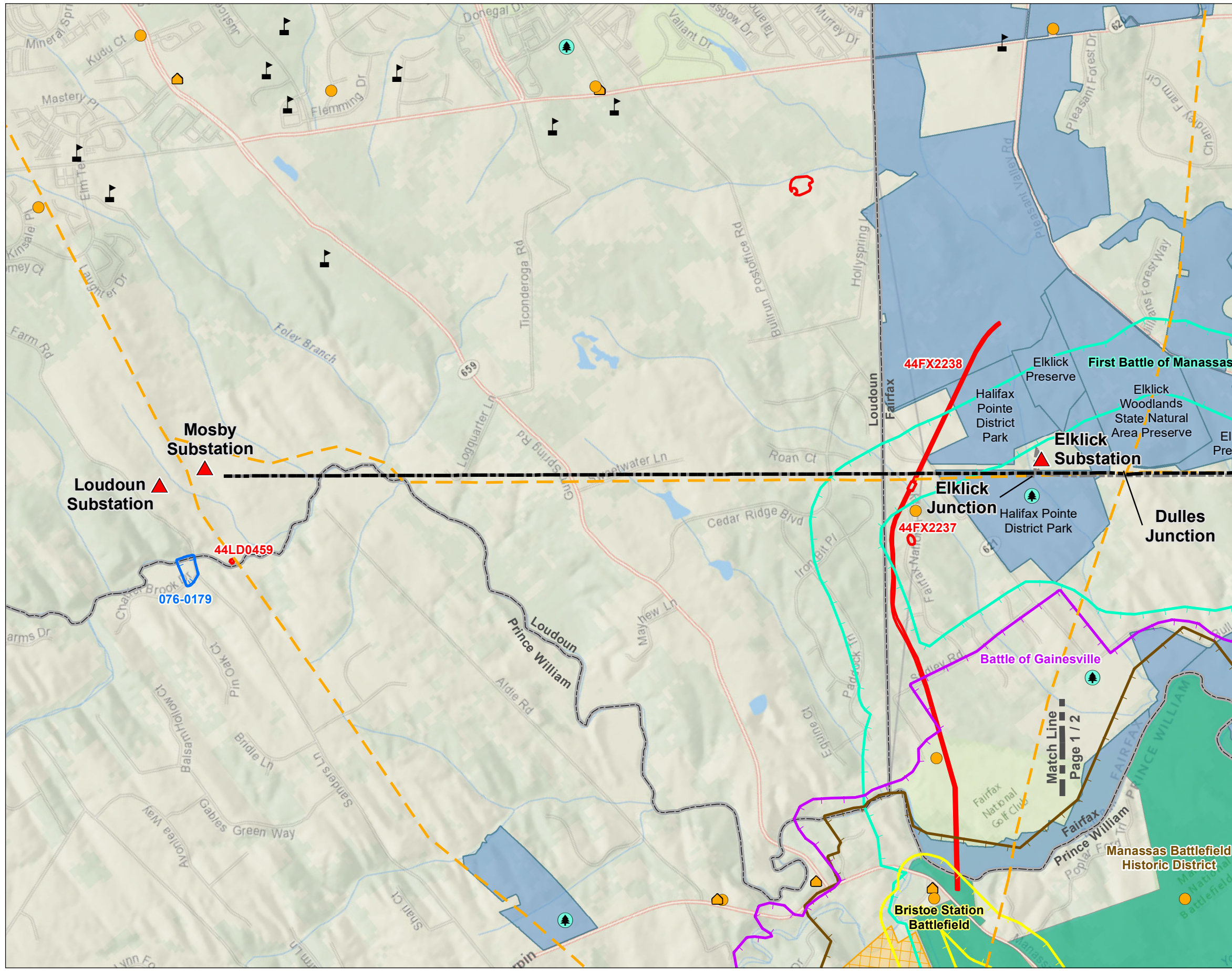
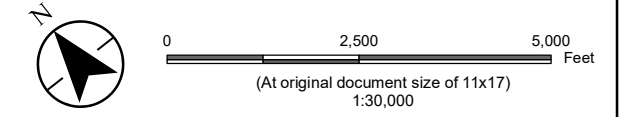
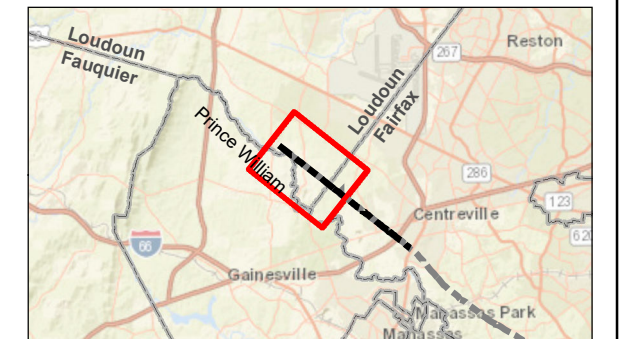


Figure No. **II.A.2.a**  
 Title **Environmental Constraints Map- Loudoun-Bull Run Segment**  
 Client/Project **Dominion Energy Virginia Loudoun-Ox 230 kV Transmission Line Partial Rebuild** 203401269  
 Project Location **Fairfax, Loudoun, and Prince William Counties, Virginia** Prepared by LJB on 2019-03-05  
 TR by ECL on 2019-04-12  
 IR by CPG on 2019-04-15



- Cemetery
- Park
- School
- Place of Worship
- Substation
- Loudoun-Bull Run Segment
- Other Partial Rebuild Segments
- Pipeline
- Architecture Resource
- Manassas Battlefield Historic District (076-0271)
- Bristoe Station Battlefield (076-5036)
- Battle of Gainesville (076-5190)
- First Battle of Manassas (076-5335)
- Archaeological Resource
- Virginia Outdoors Foundation Easement (VOF)
- Conservation Easement
  - Federal
  - Local Government
  - Private



- Notes**
1. Coordinate System: NAD 1983 StatePlane Virginia North FIPS 4501 Feet
  2. Data Sources: Dominion Energy Virginia, Stantec, NPMS, ESRI, Google Earth, DCR, PADUS, VOF, U.S. National Transportation Atlas Railroads
  3. Historic resource data provided by Virginia Department of Historic Resources, Virginia Cultural Resources Information System (VCRIS)
  4. Base Map © National Geographic and © ESRI
  5. Institutions searched within a three mile radius of project limits and digitized from Google Earth



Disclaimer: This document has been prepared based on information provided by others as cited in the Notes section. Stantec has not verified the accuracy and/or completeness of this information and shall not be responsible for any errors or omissions which may be incorporated herein as a result. Stantec assumes no responsibility for data supplied in electronic format, and the recipient accepts full responsibility for verifying the accuracy and completeness of the data.



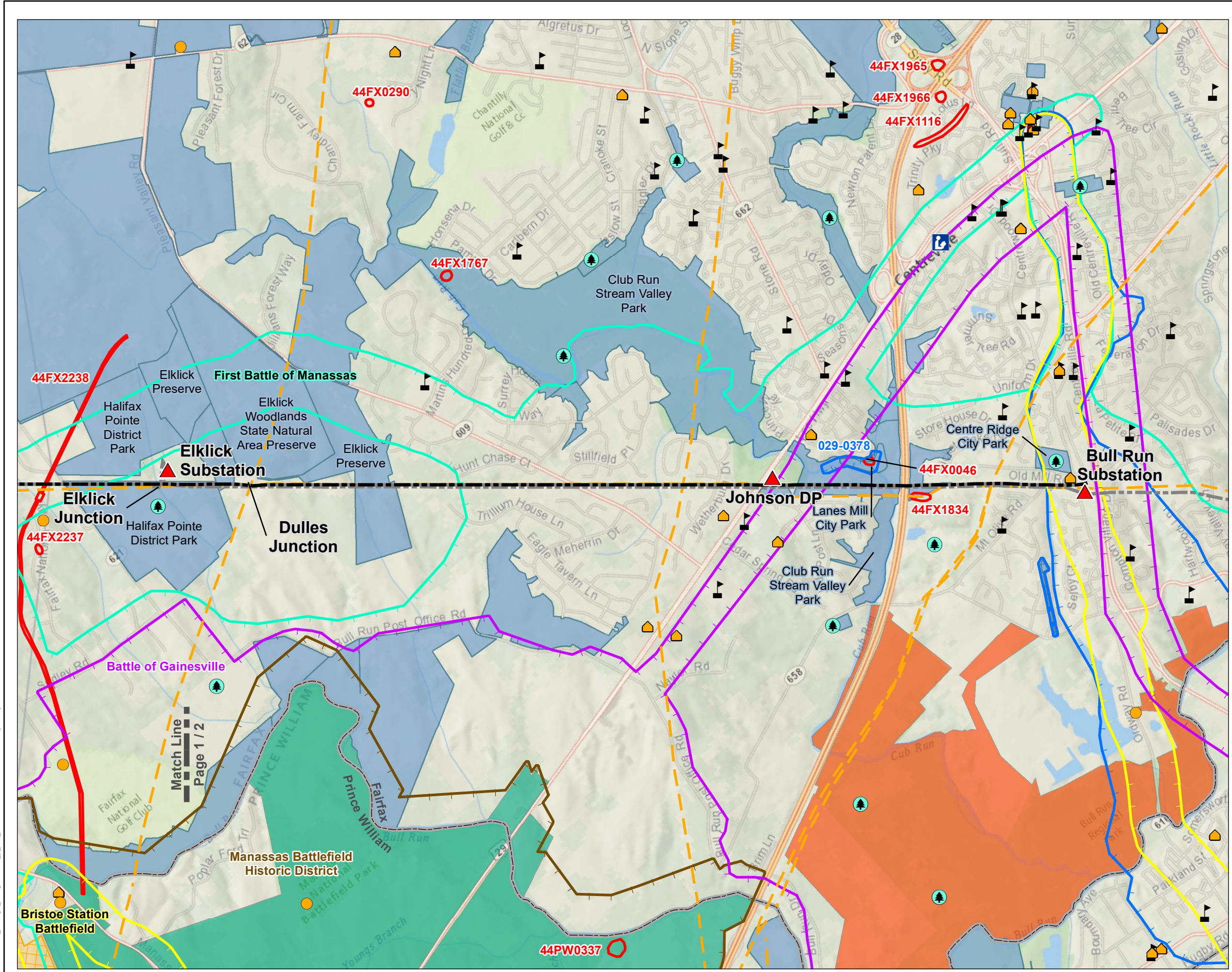
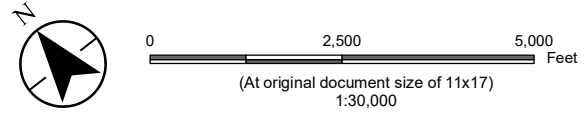
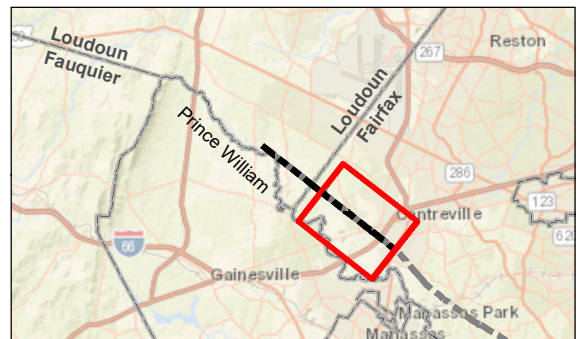


Figure No. **II.A.2.a**  
 Title **Environmental Constraints Map- Loudoun-Bull Run Segment**  
 Client/Project **Dominion Energy Virginia Loudoun-Ox 230 kV Transmission Line Partial Rebuild** 203401269  
 Project Location **Fairfax, Loudoun, and Prince William Counties, Virginia** Prepared by LJB on 2019-03-05 TR by ECL on 2019-04-12 IR by CPG on 2019-04-15



- Cemetery
- Park
- School
- Library
- Place of Worship
- Substation
- Loudoun-Bull Run Segment
- Other Partial Rebuild Segments
- Pipeline
- Architecture Resource
- Manassas Battlefield Historic District (076-0271)
- Bristoe Station Battlefield (076-5036)
- Battle of Gainesville (076-5190)
- First Battle of Manassas (076-5335)
- Archaeological Resource
- Virginia Outdoors Foundation Easement (VOF)
- Conservation Easement
  - Federal
  - Local Government
  - Private
  - Regional Agency Special District



**Notes**  
 1. Coordinate System: NAD 1983 StatePlane Virginia North FIPS 4501 Feet  
 2. Data Sources: Dominion Energy Virginia, Stantec, NPMS, ESRI, Google Earth, DCR, PADUS, VOF, U.S. National Transportation Atlas Railroads  
 3. Historic resource data provided by Virginia Department of Historic Resources, Virginia Cultural Resources Information System (VCRIS)  
 4. Base Map © National Geographic and © ESRI  
 5. Institutions searched within a three mile radius of project limits and digitized from Google Earth



U:\203401269\03\_data\gis\_cad\gis01269\_p\_1a2\_b.mxd Revised: 2019-07-17 By: lberryman



U:\203401269\03\_data\gis\_cad\gis01269\_p\_la2\_le.mxd Revised: 2019-07-17 By: lberryman

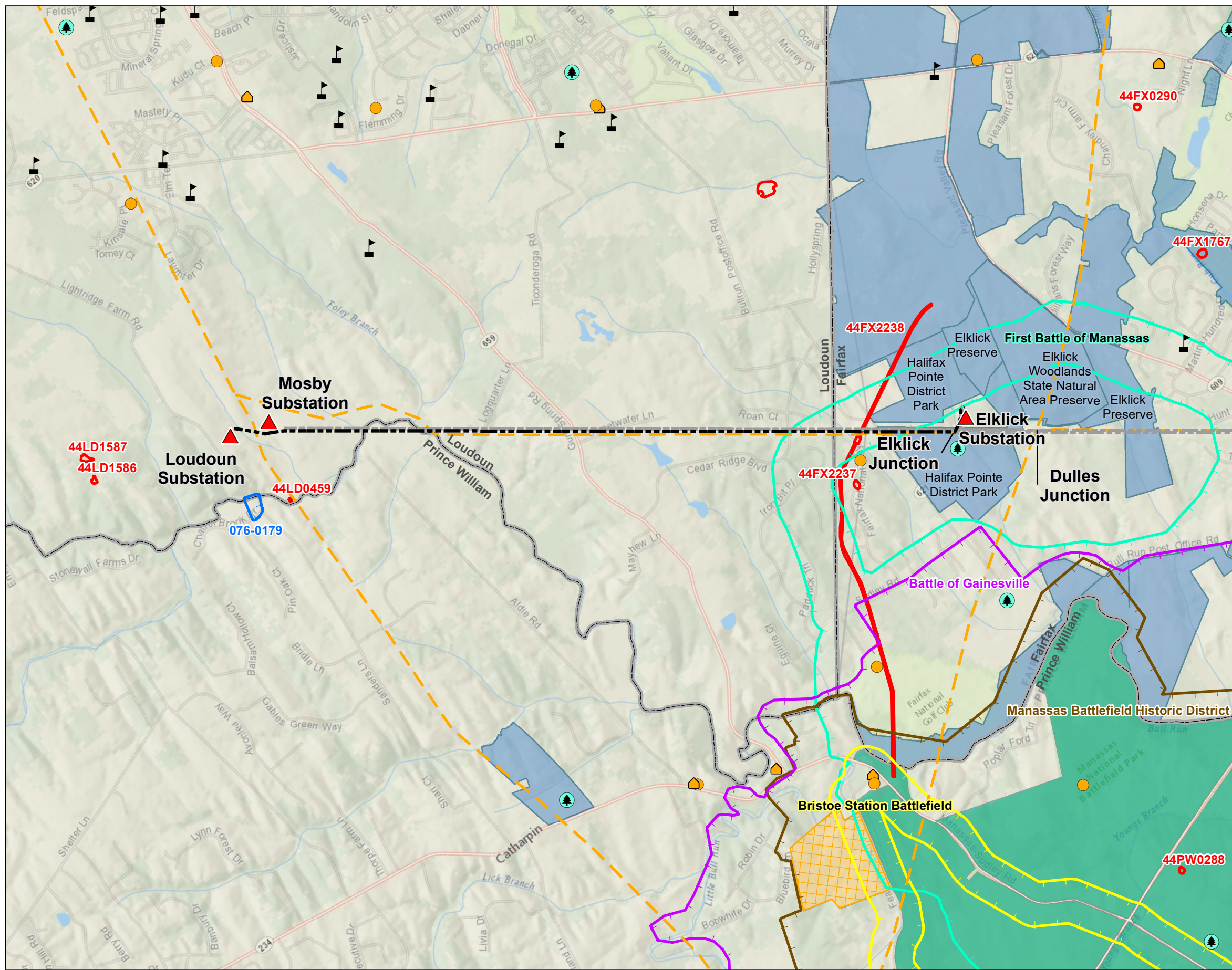
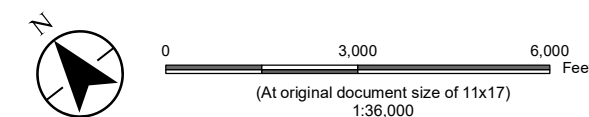
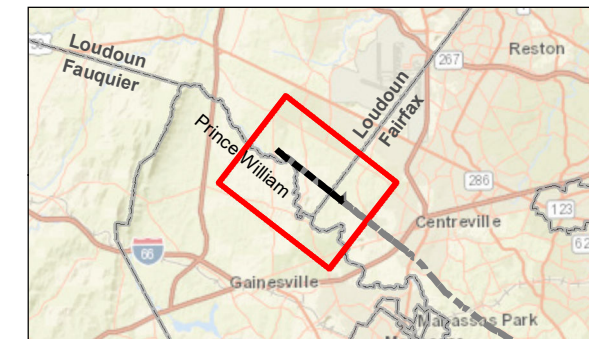


Figure No. **II.A.2.b**  
 Title **Environmental Constraints Map- Loudoun-Elklick Segment**  
 Client/Project **Dominion Energy Virginia** 203401269  
**Loudoun-Ox 230 kV Transmission Line Partial Rebuild**  
 Project Location **Fairfax, Loudoun, and Prince William Counties, Virginia** Prepared by LJB on 2019-03-05  
 TR by ECL on 2019-04-12  
 IR by CPG on 2019-04-15



- Cemetery
- 🌲 Park
- ▲ School
- Place of Worship
- ▲ Substation
- Loudoun-Elklick Segment
- Other Partial Rebuild Segments
- Pipeline
- Architecture Resource
- Manassas Battlefield Historic District (076-0271)
- Bristoe Station Battlefield (076-5036)
- Battle of Gainesville (076-5190)
- First Battle of Manassas (076-5335)
- Archaeological Resource
- Virginia Outdoors Foundation Easement (VOF)
- Conservation Easement
  - Federal
  - Local Government
  - Private



**Notes**  
 1. Coordinate System: NAD 1983 StatePlane Virginia North FIPS 4501 Feet  
 2. Data Sources: Dominion Energy Virginia, Stantec, NPMS, ESRI, Google Earth, DCR, PADUS, VOF, U.S. National Transportation Atlas Railroads  
 3. Historic resource data provided by Virginia Department of Historic Resources, Virginia Cultural Resources Information System (VCRIS)  
 4. Base Map © National Geographic and © ESRI  
 5. Institutions searched within a three mile radius of project limits and digitized from Google Earth





U:\203401269\03\_data\gis\_cad\gis\01269\_p\_1a2\_eb.mxd Revised: 2019-07-17 By: lberryman

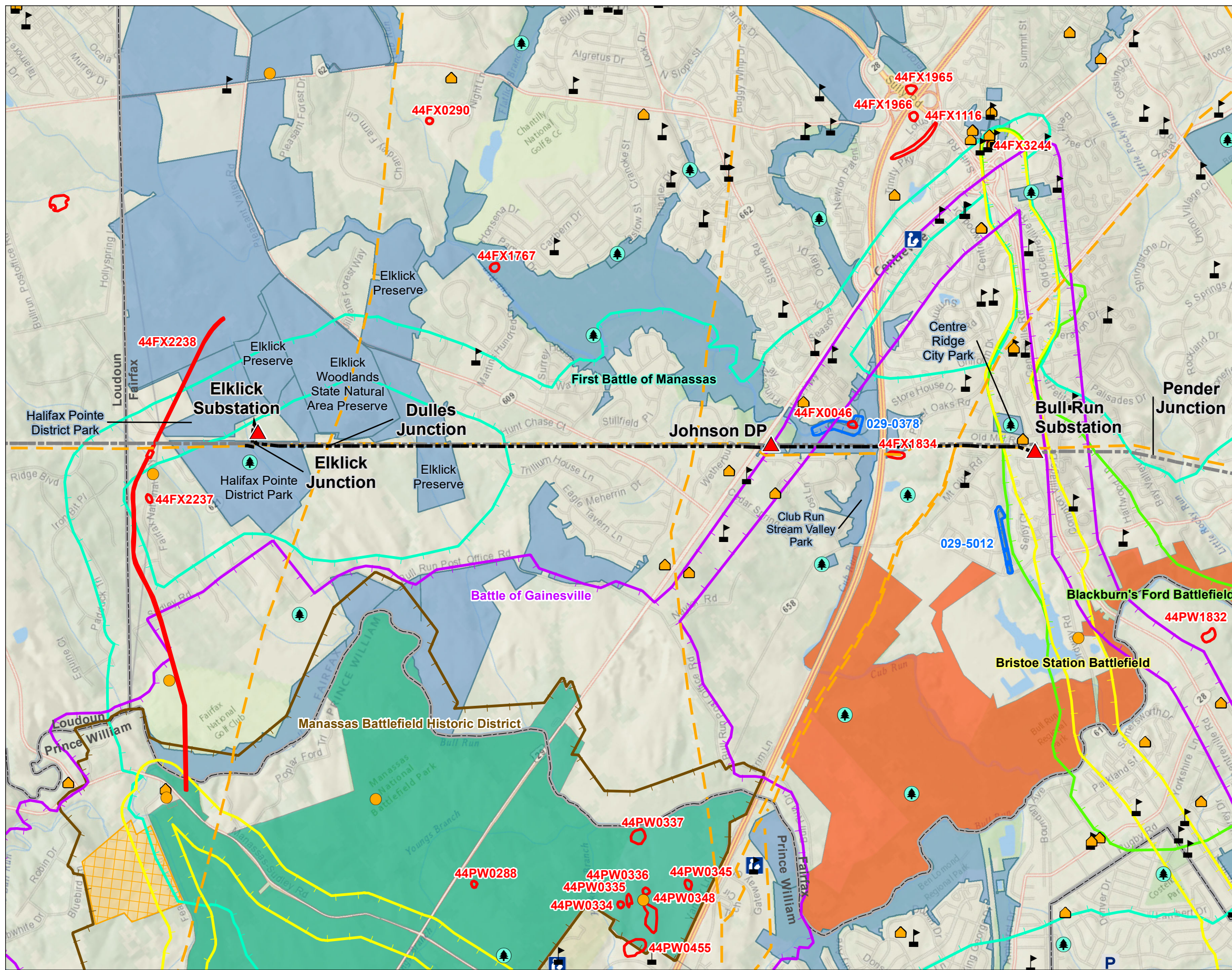
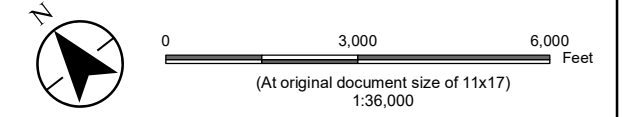
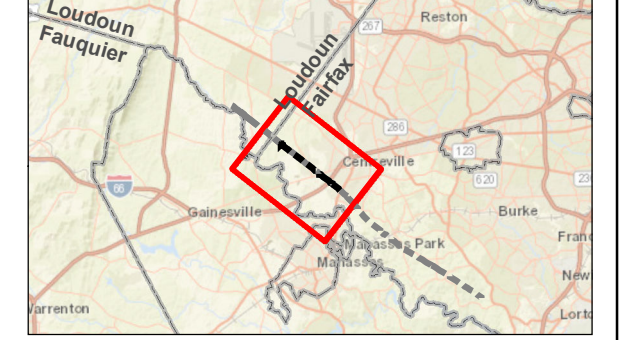


Figure No. **II.A.2.c**  
 Title **Environmental Constraints Map- Elklick-Bull Run Segment**  
 Client/Project 203401269  
 Dominion Energy Virginia  
 Loudoun-Ox 230 kV Transmission Line Partial Rebuild  
 Project Location Prepared by LJB on 2019-03-05  
 Fairfax, Loudoun, and Prince William TR by ECL on 2019-04-12  
 Counties, Virginia IR by CPG on 2019-04-15



- Cemetery
- Park
- School
- Library
- Place of Worship
- Police
- Substation
- Elklick-Bull Run Segment
- Other Partial Rebuild Segments
- Pipeline
- Architectural Resource
- Blackburn's Ford Battlefield (029-5117)
- Manassas Battlefield Historic District (076-0271)
- Bristoe Station Battlefield (076-5036)
- Battle of Gainesville (076-5190)
- First Battle of Manassas (076-5335)
- Archaeological Resource
- Virginia Outdoors Foundation Easement (VOF)
- Conservation Easement
  - Federal
  - Local Government
  - Private
  - Regional Agency Special District Easement



**Notes**  
 1. Coordinate System: NAD 1983 StatePlane Virginia North FIPS 4501 Feet  
 2. Data Sources: Dominion Energy Virginia, Stantec, NPMS, ESRI, Google Earth, DCR, PADUS, VOF, U.S. National Transportation Atlas Railroads  
 3. Historic resource data provided by Virginia Department of Historic Resources, Virginia Cultural Resources Information System (VCRIS)  
 4. Base Map © National Geographic and © ESRI  
 5. Institutions searched within a three mile radius of project limits and digitized from Google Earth





U:\203401269\03\_data\gis\_cad\gis01269\_p\_1a2\_bc.mxd Revised: 2019-07-17 By: lberryman

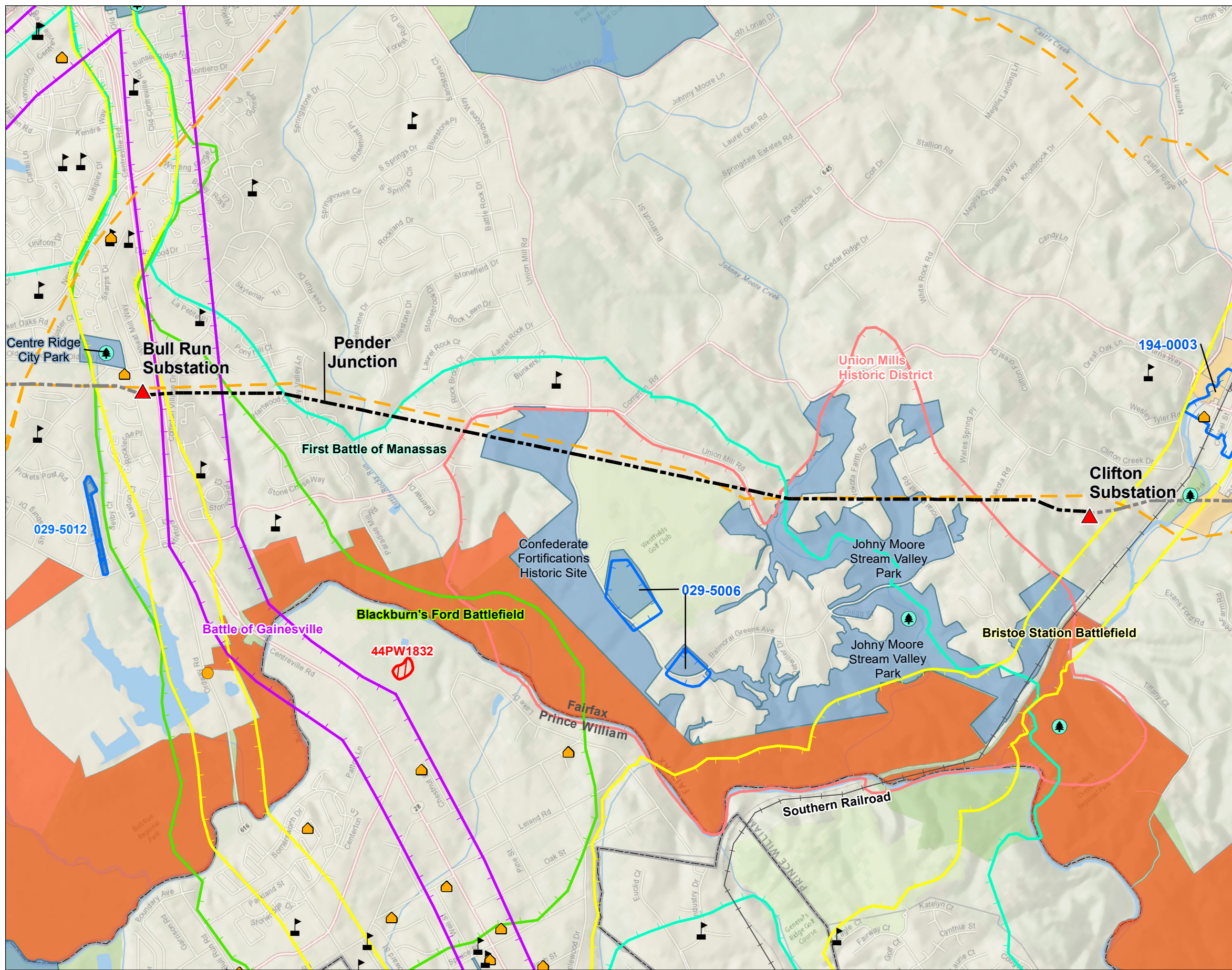
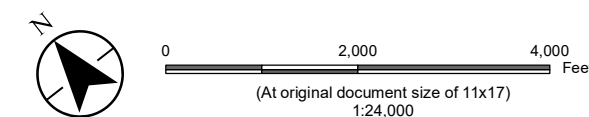


Figure No. **II.A.2.d**

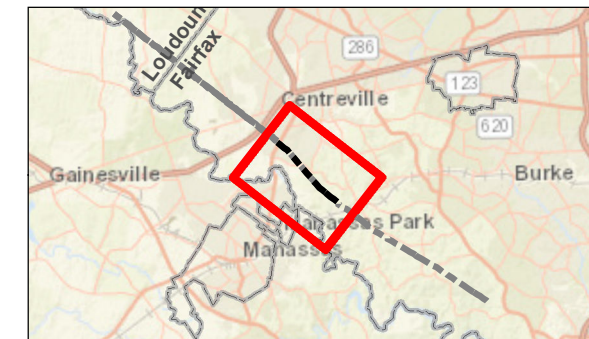
Title **Environmental Constraints Map- Bull Run-Clifton Segment**

Client/Project **Dominion Energy Virginia** 203401269  
**Loudoun-Ox 230 kV Transmission Line Partial Rebuild**

Project Location **Fairfax, Loudoun, and Prince William** Prepared by LJB on 2019-03-05  
**Counties, Virginia** TR by ECL on 2019-04-12  
 IR by CPG on 2019-04-15



- Cemetery
- Park
- School
- Place of Worship
- Substation
- Bull Run-Clifton Segment
- Other Partial Rebuild Segments
- Pipeline
- Railroad
- Architectural Resource
- Union Mills Historic District (029-0410)
- Blackburn's Ford Battlefield (029-5117)
- Bristoe Station Battlefield (076-5036)
- Battle of Gainesville (076-5190)
- First Battle of Manassas (076-5335)
- Archaeological Resource
- Conservation Easement**
- Local Government
- Private
- Regional Agency Special District



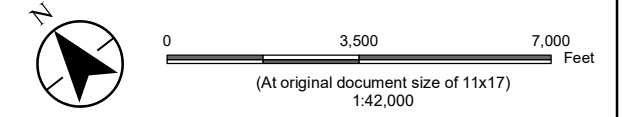
**Notes**

1. Coordinate System: NAD 1983 StatePlane Virginia North FIPS 4501 Feet
2. Data Sources: Dominion Energy Virginia, Stantec, NPMS, ESRI, Google Earth, DCR, PADUS, VOF, U.S. National Transportation Atlas Railroads
3. Historic resource data provided by Virginia Department of Historic Resources, Virginia Cultural Resources Information System (VCRIS)
4. Background: Base Map © National Geographic and © ESRI
5. Institutions searched within a three mile radius of project limits and digitized from Google Earth

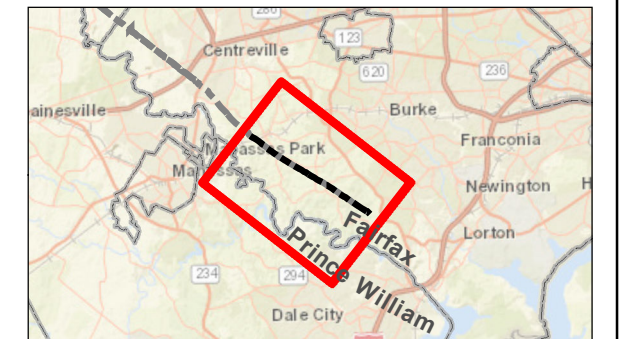




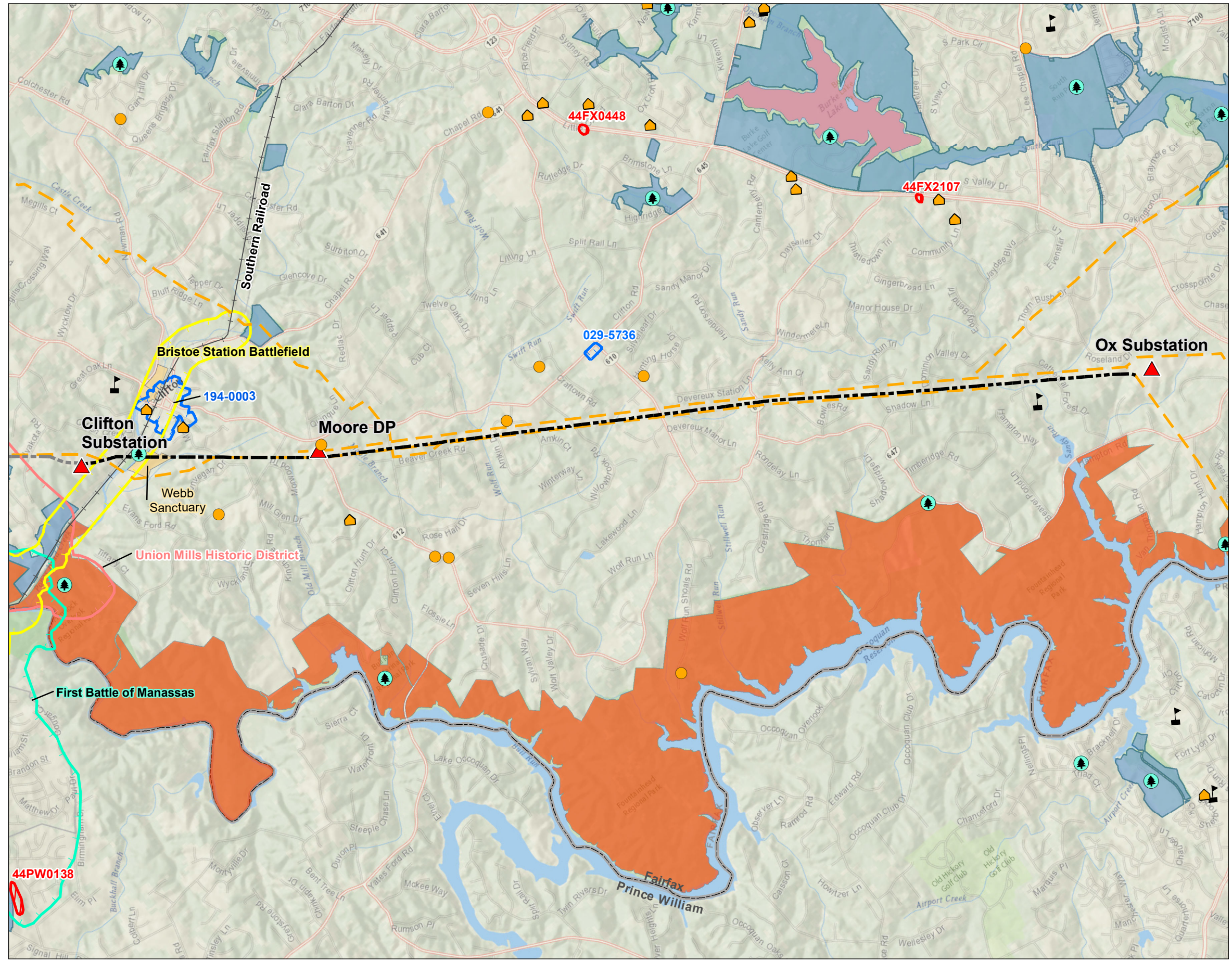
Figure No. **II.A.2.e**  
 Title **Environmental Constraints Map- Clifton-Ox Segment**  
 Client/Project **Dominion Energy Virginia Loudoun-Ox 230 kV Transmission Line Partial Rebuild** 203401269  
 Project Location **Fairfax, Loudoun, and Prince William Counties, Virginia** Prepared by LJB on 2019-03-05 TR by ECL on 2019-04-12 IR by CPG on 2019-04-15



- Cemetery
- Park
- School
- Library
- Place of Worship
- Substation
- Clifton-Ox Segment
- Other Partial Rebuild Segments
- Pipeline
- Railroad
- Architectural Resource
- Union Mills Historic District (029-0410)
- Bristoe Station Battlefield (076-5036)
- First Battle of Manassas (076-5335)
- Archaeological Resource
- Conservation Easement**
- Local Government
- Private
- Regional Agency Special District
- State



**Notes**  
 1. Coordinate System: NAD 1983 StatePlane Virginia North FIPS 4501 Feet  
 2. Data Sources: Dominion Energy Virginia, Stantec, NPMS, ESRI, Google Earth, DCR, PADUS, VOF, U.S. National Transportation Atlas Railroads  
 3. Historic resource data provided by Virginia Department of Historic Resources, Virginia Cultural Resources Information System (VCRIS)  
 4. Base Map © National Geographic and © ESRI  
 5. Institutions searched within a three mile radius of project limits and digitized from Google Earth



U:\203401269\03\_data\gis\_cad\gis01269\_p\_11a2\_co.mxd Revised: 2019-07-17 By: lberryman

